

Tables and charts

Tables and charts are generally based on statistical information available on 28 October 2011. A list of symbols is on p. 2.

A		Tables
88	Table 1	Main monthly indicators
90	Table 2	Historical economic indicators
B		Charts
92	Chart 1	Consumer price inflation 1940-2010
92	Chart 2	Economic growth 1945-2010
92	Chart 3	Growth of GDP, private consumption and gross fixed capital formation 1980-2010
92	Chart 4	Private consumption, public consumption and gross fixed capital formation as percentage of GDP 1980-2010
92	Chart 5	Economic growth Q1/1998 - Q2/2011
92	Chart 6	Components of economic growth Q1/1998 - Q2/2011
93	Chart 7	Gross national savings and fixed capital formation 1960-2010
93	Chart 8	Current account balance 1945-2010
93	Chart 9	Merchandise trade January 1996 - August 2011
93	Chart 10	Exports and imports of services Q1/1996 - Q2/2011
93	Chart 11	External debt and assets Q1/1998 - Q2/2011
93	Chart 12	Net external debt position 1980-2010
94	Chart 13	Real effective exchange rate of the Icelandic króna 1960-2010
94	Chart 14	General government revenues and expenditures 1978-2010
94	Chart 15	Treasury borrowing and credit budget balance 1990-2010
94	Chart 16	General government balance and debt 1980-2010
94	Chart 17	Household debt as percentage of disposable income 1980-2010
94	Chart 18	Real wages January 1990 - September 2011
95	Chart 19	Unemployment and labour participation January 1996 - September 2011
95	Chart 20	Short-term interest rates January 1997 - September 2011
95	Chart 21	Long-term interest rates January 1997 - September 2011
95	Chart 22	Real yield and broad money 1960-2010
95	Chart 23	M3, DMB lending and base money January 1997 - September 2011
95	Chart 24	Deposit money bank lending by sector January 1998 - September 2011
96	Chart 25	Growth of credit system lending Q1/1994 - Q3/2008
96	Chart 26	Credit system domestic liabilities at end of year 1990-2007
96	Chart 27	Reserve assets and Central Bank net external position Q1/1996 - Q3/2011

Table 1 Main monthly indicators

	Consumer prices % change in CPI ¹ over the previous		Exchange rate % ch. in effective exchange rate ^{1,2}		Yields (end of period, %)				Money and credit (end of period) ⁵ 12-month % change					
	1 month	12 months	1 month	12 months	Money market		Bond market ⁶		M3	Base money	DMB lending	DMB foreign liabilities ⁷		
					Central	Bank col- lateral loans ³	3-month REIBOR ⁴	RIKB 13 0517					RIKB 19 0226	HFF 150644
2009														
July	0.2	11.3	-2.2	-30.8	12.0	8.2	8.4	8.8	8.8	4.5	49.8	14.7	-70.1	-95.7
August	0.5	10.9	-1.3	-31.7	12.0	8.1	7.6	8.4	8.4	4.2	46.3	25.3	-70.2	-95.8
September	0.8	10.8	-1.3	-32.6	12.0	8.5	7.5	8.4	8.4	4.1	-3.5	25.8	-75.1	-96.7
October	1.1	9.7	0.5	-26.6	12.0	8.5	7.3	7.9	7.9	3.9	-18.8	-3.1	-16.6	-47.7
November	0.7	8.6	-0.8	-13.9	11.0	8.8	7.6	8.0	8.0	3.9	-32.1	-0.7	-26.3	-54.5
December	0.5	7.5	-0.6	-3.1	10.0	8.4	7.5	7.9	7.9	3.8	1.3	-5.3	-22.4	-57.4
2010														
January	-0.3	6.6	0.6	-8.3	9.5	8.3	7.3	7.8	7.8	3.8	-22.1	-5.9	-14.4	-52.7
February	1.1	7.3	0.7	-8.8	9.5	8.3	7.1	7.4	7.4	3.7	-19.2	-6.6	-14.6	-51.1
March	0.6	8.5	1.2	-17.3	9.0	8.0	6.3	7.1	7.1	3.8	-16.3	0.1	4.6	5.2
April	0.2	8.3	1.2	-15.1	9.0	8.0	5.9	6.6	6.6	3.7	-41.5	-6.9	1.3	-6.0
May	0.4	7.5	0.6	-4.4	8.5	7.5	5.1	6.3	6.3	3.6	-21.5	-8.8	-0.2	-6.2
June	-0.3	5.7	3.5	1.9	8.0	7.1	4.2	6.0	6.0	3.4	-40.0	-3.6	0.2	-17.9
July	-0.7	4.8	2.8	7.2	8.0	7.1	4.3	5.9	5.9	3.5	-50.7	-0.5	-0.7	-18.8
August	0.2	4.5	0.4	9.0	7.0	6.1	4.0	5.3	5.3	2.9	-49.6	-6.0	0.0	-21.7
September	0.0	3.7	2.0	12.7	6.3	5.4	4.2	6.1	6.1	3.4	-55.2	-10.7	-2.4	-40.2
October	0.7	3.3	1.1	13.4	6.3	5.3	4.8	6.5	6.5	3.5	-38.1	-12.6	-2.7	-42.6
November	0.1	2.6	0.0	14.2	5.5	4.8	3.7	5.6	5.6	3.4	-3.7	-8.4	0.9	-40.7
December	0.3	2.5	0.5	15.5	4.5	4.2	2.9	5.7	5.7	3.3	-19.4	-3.0	-0.3	-33.4
2011														
January	-0.9	1.8	-0.8	13.8	4.5	4.1	2.6	5.9	5.9	3.3	-2.8	-2.9	-5.7	-38.0
February	1.2	1.9	-2.1	10.6	4.3	4.0	3.3	6.3	6.3	3.2	16.4	1.0	-5.0	-40.0
March	1.0	2.3	-1.6	7.5	4.3	4.0	3.1	6.2	6.2	3.1	-31.9	2.1	-5.1	-46.4
April	0.8	2.8	-0.6	5.6	4.3	4.0	3.0	6.5	6.5	3.1	9.7	-3.9	-5.5	-40.2
May	0.9	3.4	-0.3	4.7	4.3	4.0	3.0	7.4	7.4	3.3	-25.1	-2.9	-7.3	-39.2
June	0.5	4.2	-1.1	0.1	4.3	4.0	2.8	7.2	7.2	3.3	-17.8	-5.5	-7.4	-40.4
July	0.1	5.0	-0.6	-3.2	4.3	4.0	3.0	7.6	7.6	3.3	5.0	-3.8	-5.0	-37.1
August	0.3	5.0	-0.4	-3.9	4.5	4.5	3.6	7.8	7.8	3.3	-14.7	-1.2	-5.2	-38.9
September	0.6	5.7	0.8	-5.1	4.5	4.6	3.7	7.0	7.0	3.2	-5.2	...

1. Percentage changes between period averages. 2. Based on the official effective exchange rate basket (trade-weighted). A positive sign indicates appreciation of the Icelandic króna. 3. From June 2007, the presentation of the policy rate has been changed. It is now presented as a nominal rate instead of a yield. 4. Average yield on the interbank market in Icelandic krónur. 5. For Treasury bonds and HFF bonds, the quoted yield is in excess of changes in the CPI. Trading with HFF bonds began in July 2004; prior figures are for housing bonds. 6. Annual figures are changes over one year. Domestic borrowers only as of January 2002. Latest figures are preliminary. 7. DMBs = deposit money banks = commercial and savings banks and other institutions permitted to accept deposits from the public. Since July 2007, derivatives have been considered to foreign liabilities and the presentation of Central Banks' short-term position has been changed.

Table 1 (continued) Main monthly indicators

2009	Foreign exchange market and reserves				Foreign trade and external conditions					Labour market			Public finance		
	Gross foreign currency reserves:				Trade balance (b.kr.)	Merchandise exports (b.kr.)	Merchandise imports (b.kr.)	Marine product prices 12-mo. % ch. ¹⁰	Real exchange rate of króna ¹¹	Unemployment	Wages, 12-mo. % change ¹²	Reg. Treasury financial balance, % of reg. revenues, from Jan. ¹³	Asset prices 12-mo. % changes	Equity prices ¹⁴	Housing prices ¹⁵
	Position B.kr.	Merch. imports ⁸	For. short-term liabil. ⁹	net purchases (b.kr.)											
July	385.1	9.8	...	-1.3	0.4	41.5	41.1	0.1	66.7	8.0	2.6	-36.4	...	-11.2	
August	449.3	12.2	...	-1.2	12.4	44.1	31.6	0.7	66.1	7.7	2.2	-25.6	...	-10.3	
September	434.7	12.3	...	-0.5	10.8	51.3	40.5	-1.5	66.9	7.2	1.9	-25.4	...	-10.2	
October	451.0	12.8	...	-1.4	12.1	46.9	34.8	3.4	67.1	7.6	1.9	-29.5	...	-10.0	
November	402.8	11.5	...	-1.7	2.1	44.3	42.2	0.2	67.0	8.0	4.0	-31.8	...	-11.1	
December	484.9	13.8	2.2	0.0	13.2	46.0	32.8	1.7	67.7	8.2	3.6	-33.4	...	-12.0	
2010															
January	475.0	13.5	2.0	0.0	5.7	38.6	32.9	-0.7	68.1	9.0	3.1	-56.9	-10.8	-10.2	
February	480.1	13.9	2.0	0.0	13.9	44.3	30.4	0.5	69.4	9.3	3.6	-8.3	4.7	-10.0	
March	489.9	14.0	1.9	0.0	11.4	52.8	41.3	2.4	70.2	9.3	3.6	-18.2	47.9	-5.9	
April	506.3	14.5	2.2	0.0	7.3	41.1	33.8	-0.1	70.6	9.0	4.0	-16.6	54.8	-3.6	
May	506.1	14.6	2.2	0.0	16.6	52.3	35.7	1.6	73.2	8.3	4.0	-21.6	20.4	-1.0	
June	573.1	16.3	2.5	0.0	11.4	50.7	39.2	1.5	75.0	7.6	6.1	-22.8	21.2	-1.3	
July	570.0	16.7	2.5	0.0	4.0	44.0	39.9	0.2	74.9	7.5	6.0	-31.7	25.6	-2.9	
August	546.3	15.8	2.8	1.0	7.1	41.9	34.7	-1.2	76.6	7.3	6.0	-25.3	14.4	-3.6	
September	487.2	14.5	3.6	1.4	10.7	49.8	39.1	5.1	77.3	7.1	6.0	-24.0	13.7	-3.2	
October	468.3	13.9	3.6	0.9	11.2	47.0	35.9	1.0	77.5	7.5	6.0	-21.3	16.9	-2.3	
November	542.5	15.6	4.1	1.2	6.9	48.3	41.4	0.9	77.8	7.7	4.7	-20.2	19.4	-0.9	
December	664.8	18.9	3.3	25.5	13.9	50.4	36.5	-0.5	77.1	8.0	4.5	-20.1	14.6	0.2	
2011															
January	732.7	20.2	5.8	0.9	7.8	42.3	34.6	1.5	75.1	8.5	4.4	-39.4	24.9	0.5	
February	719.4	19.5	5.4	1.0	8.4	42.8	34.4	0.7	74.4	8.6	4.2	3.8	14.4	2.0	
March	765.4	20.6	4.1	1.2	12.0	57.0	45.0	1.3	74.2	8.6	4.4	-2.6	5.8	1.9	
April	759.2	20.3	4.1	1.0	5.0	42.0	37.0	1.5	73.9	8.1	4.4	-9.9	-0.6	2.7	
May	708.6	17.9	3.9	1.2	6.2	56.0	49.8	-0.3	73.7	7.4	5.3	-15.8	11.2	3.5	
June	827.8	20.8	4.7	1.0	2.0	45.0	43.0	1.1	73.7	6.7	7.1	-16.4	5.4	4.7	
July	858.2	21.2	4.7	1.0	13.5	55.6	42.1	-0.2	73.7	6.6	7.8	-26.9	5.2	5.9	
August	915.3	22.5	5.5	1.2	11.1	56.7	45.6	1.2	74.4	6.7	8.0	...	-0.8	6.3	
September	911.7	21.8	...	1.0	15.5	62.5	47.0	...	75.6	6.6	-3.1	...	

8. Gross foreign exchange reserves at end of period as a ratio of the average monthly value of merchandise imports. Calculated at fixed exchange rates. 9. The denominator is foreign short-term liabilities of credit institutions and investment banks and includes derivatives as of July 2007. 10. Foreign currency prices of marine products are calculated by dividing marine products prices in Icelandic krónur by the export-weighted trade basket. Annual figures are % changes between annual averages. 11. Real effective exchange rate of the Icelandic króna based on relative consumer prices (a trade-weighted average of 17 trading partner countries' consumer prices is used). 2000 = 100. Average over periods. 12. Annual figures show change in annual averages. 13. Cash basis. Without privatisation revenues. 14. OMXI16 index. Annual figures are % changes over year. 15. Residential housing in greater Reykjavík area. Annual figures are % changes over year.

Sources: Statistics Iceland, Directorate of Labour, State Accounting Office, Nasdaq OMX Iceland, Registers Iceland, Central Bank of Iceland.

Table 2 Historical economic indicators

Year	Consumer prices ¹		Króna effective exchange rate		Interest rates (%)		Money and credit			Ratio of gr. reserves to merch. imports ⁵	Net ext. debt ⁶ GDP (%)	Growth of real GDP (%)		
	Consumer price index ¹	CPI inflation (%)	Nominal exchange rate ²	Real exchange rate ³ Relative CPI	Relative ULC	Indexed gov. bonds yield ⁴	Non-indexed lending	Banks' secured lending (real yield) Indexed	% change over year				Credit system lending	
1981	12.2	50.8	34.7	106.2	115.9	3.2	-1.7	2.5	70.5	72.2	54.1	3.0	36.5	4.3
1982	18.4	51.0	54.5	97.7	113.5	3.5	-9.4	2.9	58.0	92.0	100.2	2.1	46.4	2.2
1983	33.9	84.2	100.0	91.8	94.9	3.8	-14.2	3.0	78.7	85.6	82.9	2.5	57.2	-2.2
1984	43.7	29.2	116.3	96.3	92.1	7.0	3.4	5.5	33.4	43.0	40.2	2.1	60.2	4.1
1985	57.9	32.4	148.7	94.8	92.0	6.9	-2.3	5.0	47.6	29.7	35.2	2.8	63.6	3.3
1986	70.2	21.3	171.0	97.1	92.9	8.5	4.3	5.2	35.0	19.1	20.1	3.6	56.5	6.3
1987	83.4	18.8	177.3	106.0	118.3	8.7	4.7	7.7	35.2	42.1	31.4	2.4	49.4	8.5
1988	104.6	25.4	202.6	111.4	127.9	8.7	11.8	9.2	16.5	37.2	34.0	2.4	51.3	-0.1
1989	126.7	21.1	254.7	102.4	111.5	7.4	6.5	7.8	32.8	25.2	33.8	3.0	56.8	0.3
1990	145.5	14.8	283.7	99.1	99.6	7.0	9.3	8.0	24.9	11.0	12.5	3.3	43.8	1.2
1991	155.4	6.8	283.6	101.7	101.5	8.1	10.0	9.2	19.9	11.6	15.4	3.2	44.9	-0.2
1992	161.2	3.7	285.0	101.7	102.8	7.4	11.8	9.3	1.3	5.3	11.8	4.0	53.0	-3.4
1993	167.8	4.1	308.8	96.2	94.6	6.7	11.5	9.1	5.4	5.0	11.1	4.3	58.9	1.3
1994	170.3	1.5	324.8	91.0	83.2	5.0	9.5	7.9	10.7	-21.7	4.5	2.6	53.3	3.6
1995	173.2	1.7	322.3	91.1	88.0	5.6	10.1	8.7	9.6	477.3	5.9	2.4	52.0	0.1
1996	177.1	2.3	322.9	91.3	88.9	5.5	10.5	8.9	8.5	11.5	9.3	3.0	49.8	4.8
1997	180.3	1.8	318.7	92.2	90.3	5.3	11.1	9.0	16.5	12.4	11.8	2.6	51.3	4.9
1998	183.3	1.7	313.6	93.8	92.8	4.7	11.8	8.8	20.2	30.0	15.1	2.2	57.6	6.3
1999	189.6	3.4	313.1	96.3	96.8	4.4	8.0	8.6	19.3	23.1	17.3	2.5	67.1	4.1
2000	199.1	5.0	313.3	100.0	100.0	5.1	12.7	9.5	4.4	50.1	17.2	2.1	94.0	4.3
2001	212.4	6.7	376.3	87.3	86.7	5.1	9.4	10.2	-2.3	12.6	19.2	2.1	102.0	3.9
2002	222.5	4.8	365.2	91.7	90.7	5.2	13.7	10.1	23.8	2.7	3.2	2.5	89.8	0.1
2003	227.3	2.2	343.3	96.0	95.9	4.4	9.4	9.1	22.6	18.3	11.4	3.5	93.1	2.4
2004	234.6	3.2	336.3	98.1	93.1	3.9	8.3	8.0	30.1	39.0	19.9	3.6	113.5	7.8
2005	244.1	4.0	301.8	111.4	104.8	3.7	10.7	7.2	23.5	50.6	31.1	2.9	152.1	7.2
2006	260.6	6.8	337.2	104.2	102.0	4.6	10.9	7.1	22.4	41.5	31.0	4.8	201.7	4.7
2007	273.7	5.0	329.1	108.6	110.4	6.0	14.2	8.9	94.2	30.8	22.7	4.9	227.1	6.0
2008	307.7	12.4	462.1	85.5	85.7	4.6	7.9	10.1	32.1	-31.2	...	7.7	735.6	1.3
2009	344.6	12.0	622.3	70.0	63.9	4.4	4.2	8.0	-5.3	-15.3	...	13.8	750.3	-6.7
2010	363.2	5.4	604.0	74.5	72.2	3.4	4.9	6.4	-3.5	2.2	...	18.9	640.0	-4.0

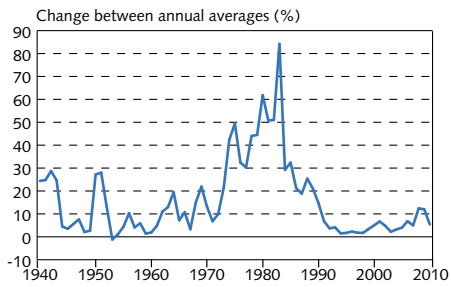
1. Annual averages (May 1988=100) and changes between years. 2. Annual averages. Exchange rate of the króna against a trade-weighted average of foreign currencies. 1983=100. 3. 2000=100. ULC=unit labour costs. 4. Annual average yield of indexed Treasury bonds of all maturities. Yields on Iceland Stock Exchange (OMX Iceland) from 1987. Before that, primary market yields. 5. Gross foreign exchange reserves at end of period as a ratio of the average monthly value of merchandise imports in the last 12 months. Calculated at fixed exchange rates. 6. External debt ratio is calculated as a percentage of accumulated GDP for the last four quarters at current exchange rate.

Table 2 (continued) Historical economic indicators

	Components of GDP				External trade				General government (% of GDP) ⁷			Labour market (% of labour force)		Wages (% change from previous year)	
	(% change from previous year)		National expenditure		(% change from previous year)		Terms of trade		Financial balance	Revenues	Expenditures	Unemployment	Labour participation ⁸	Real wages ⁹	Real disp. income
	Private consumption	Gross fixed cap. formation	Exports (volume changes)	Imports	Exports	Imports									
1981	6.2	1.2	5.6	3.2	7.1	-0.4	-4.1	1.3	36.8	35.5	0.4	76.8	0.7	5.4	
1982	5.0	0.1	5.0	-8.9	-0.6	-0.7	-8.0	1.7	37.9	36.2	0.8	77.6	1.7	2.2	
1983	-5.6	-12.7	-8.6	11.0	-9.7	-1.4	-1.8	-2.0	35.8	37.8	1.0	77.4	-16.7	-12.5	
1984	3.7	9.4	6.4	2.4	9.1	0.7	-4.5	2.2	36.9	34.7	1.3	77.6	-3.1	-2.5	
1985	4.2	1.0	2.7	11.1	9.4	-0.9	-3.8	-1.6	35.4	37.0	0.9	79.3	1.2	10.8	
1986	6.9	-1.6	4.5	5.9	0.9	5.4	0.7	-4.0	35.4	39.4	0.7	80.9	5.7	9.5	
1987	16.2	18.8	15.7	3.3	23.3	4.3	-3.3	-0.8	35.6	36.5	0.4	84.1	9.0	25.8	
1988	-3.8	-0.2	-0.6	-3.6	-4.6	-0.8	-3.4	-2.0	39.5	41.5	0.6	80.1	2.2	-1.9	
1989	-4.2	-7.9	-4.4	2.9	-10.3	-3.9	-1.3	-4.4	38.5	43.0	1.7	78.7	-9.1	-8.9	
1990	0.5	3.0	1.5	0.0	1.0	0.3	-2.1	-3.3	38.1	41.4	1.8	77.5	-4.9	-3.9	
1991	3.0	2.6	3.5	-5.9	5.3	3.5	-4.0	-2.9	39.8	42.7	1.5	81.0	1.4	3.1	
1992	-3.2	-10.4	-4.6	-2.0	-6.0	-0.6	-2.4	-2.8	40.8	43.6	3.1	81.8	-0.8	-2.8	
1993	-4.6	-9.8	-2.9	6.5	-7.5	-3.6	0.7	-4.5	39.0	43.4	4.4	81.1	-2.6	-2.0	
1994	2.9	-0.2	1.8	9.3	3.8	0.3	1.9	-4.7	38.6	43.2	4.8	81.3	-0.3	2.5	
1995	2.2	-1.7	2.2	-2.3	3.6	1.0	0.7	-3.0	39.6	42.5	5.0	82.9	2.8	2.7	
1996	5.7	25.0	6.8	9.9	16.5	-3.1	-1.8	-1.6	40.5	42.0	4.4	81.6	4.0	4.2	
1997	6.3	9.3	5.8	5.6	8.0	1.9	-1.8	0.0	40.5	40.5	3.9	81.0	3.6	7.3	
1998	10.2	34.4	13.8	2.5	23.4	5.3	-6.8	-0.4	40.9	41.3	2.8	82.3	7.6	8.8	
1999	7.9	-4.1	4.2	4.0	4.4	-0.7	-6.8	1.1	43.2	42.1	1.9	83.2	3.3	6.3	
2000	4.2	11.8	5.9	4.2	8.6	-2.4	-10.2	1.7	43.6	41.9	1.3	83.5	1.6	8.2	
2001	-2.8	-4.3	-2.1	7.4	-9.1	0.4	-4.3	-0.7	41.9	42.6	1.4	83.6	2.0	-3.0	
2002	-1.5	-14.0	-2.3	3.8	-2.6	0.5	1.5	-2.6	41.7	44.3	2.5	82.8	2.3	5.0	
2003	6.2	11.1	5.8	1.6	10.7	-4.0	-4.8	-2.8	42.8	45.6	3.4	82.1	3.4	3.8	
2004	7.0	28.7	10.1	8.4	14.5	-1.2	-9.8	0.0	44.0	44.0	3.1	80.7	1.4	7.5	
2005	12.7	34.4	15.4	7.5	29.3	1.0	-16.0	4.9	47.1	42.3	2.1	81.9	2.6	11.2	
2006	3.6	24.4	9.9	-4.6	11.3	3.3	-23.8	6.3	48.0	41.6	1.2	83.1	2.6	8.4	
2007	5.7	-12.2	-0.4	17.7	-1.5	0.1	-16.4	5.4	47.7	42.3	1.0	83.3	3.8	10.6	
2008	-7.9	-20.0	-8.6	7.0	-18.4	-6.1	-24.5	-13.5	44.1	57.6	1.6	82.6	-3.8	0.4	
2009	-14.9	-51.1	-20.3	6.6	-24.0	-9.8	-10.3	-10.0	41.0	51.0	8.0	80.9	-7.2	-17.4	
2010	-0.4	-8.0	-2.7	0.4	4.0	5.9	-7.8	-10.1	41.5	51.5	8.1	81.1	-0.6	-12.6	

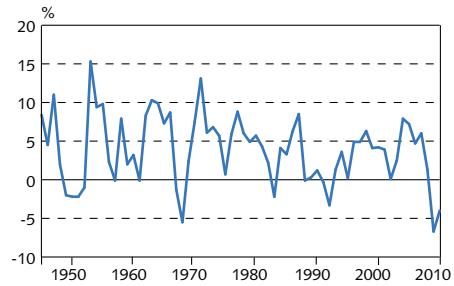
7. Central and local governments and the social security system. 8. Participation rate as per National Economic Institute definition until 1990, but based on Statistics Iceland labour market survey from 1991. 9. Statistics Iceland wage index. Deflated by consumer prices. Sources: Directorate of Labour, Ministry of Finance, Statistics Iceland, Central Bank of Iceland.

Chart 1
Consumer price inflation 1940-2010
 Yearly averages of CPI



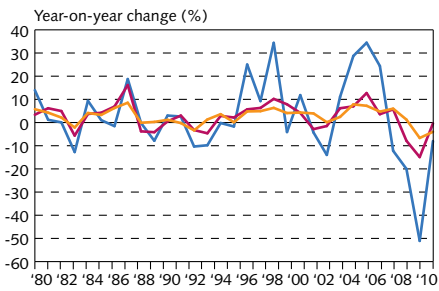
Source: Statistics Iceland.

Chart 2
Economic growth 1945-2010¹
 Change in real GDP between years



1. Preliminary data 2010.
 Source: Statistics Iceland.

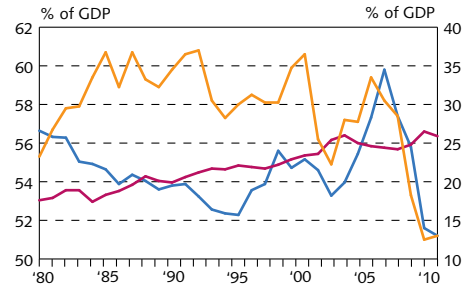
Chart 3
Growth of GDP, private consumption and gross fixed capital formation 1980-2010¹



— Gross fixed capital formation
 — Private consumption
 — GDP

1. Preliminary data 2010.
 Source: Statistics Iceland.

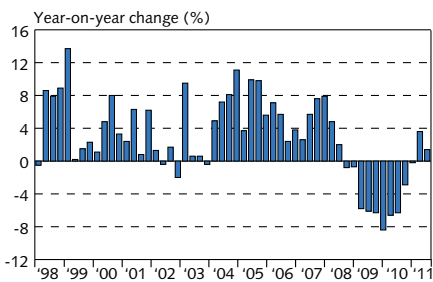
Chart 4
Private consumption, public consumption and gross fixed capital formation 1980-2010¹



— Gross fixed capital formation (right)
 — Public consumption (right)
 — Private consumption (left)

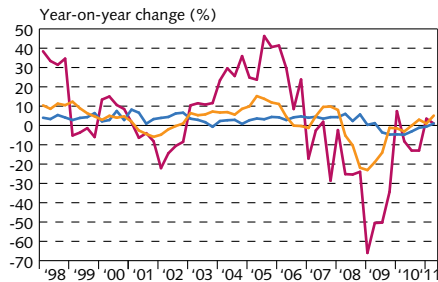
1. Preliminary data 2010.
 Source: Statistics Iceland.

Chart 5
Economic growth Q1/1998 - Q2/2011¹
 Volume change in GDP



1. Latest data are preliminary.
 Source: Statistics Iceland.

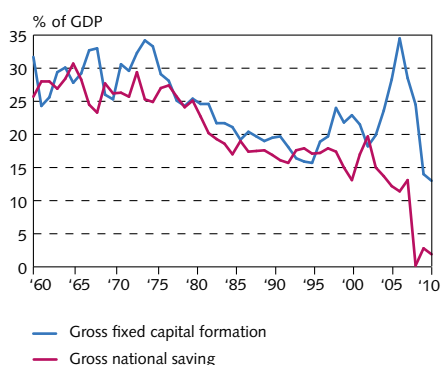
Chart 6
Components of economic growth Q1/1998 - Q2/2011¹



— Public consumption
 — Gross fixed capital formation
 — Private consumption

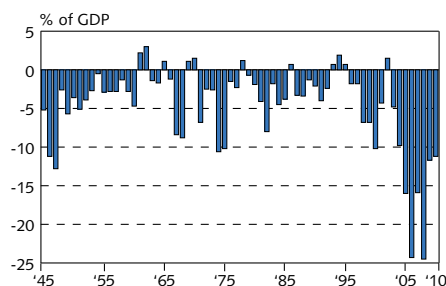
1. Latest data are preliminary.
 Source: Statistics Iceland.

Chart 7
Gross national saving and fixed capital formation 1960-2010¹



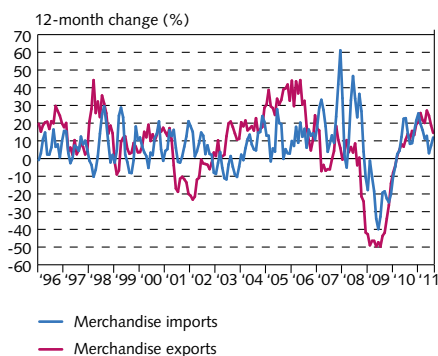
1. Preliminary data 2010.
Source: Statistics Iceland.

Chart 8
Current account balance 1945-2010¹



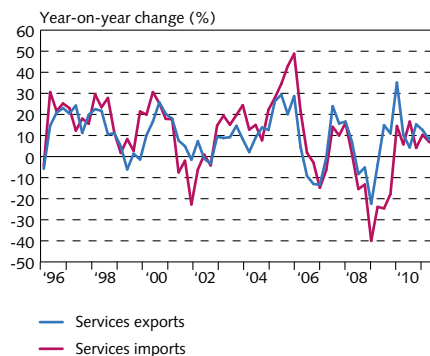
1. Preliminary data 2010.
Source: Statistics Iceland.

Chart 9
Merchandise trade January 1996 - August 2011
3-month moving averages at fixed exchange rates



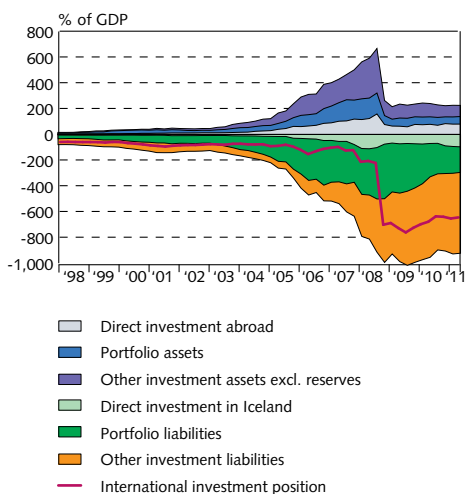
Sources: Statistics Iceland, Central Bank of Iceland.

Chart 10
Exports and imports of services Q1/1996 - Q2/2011¹
At constant exchange rate



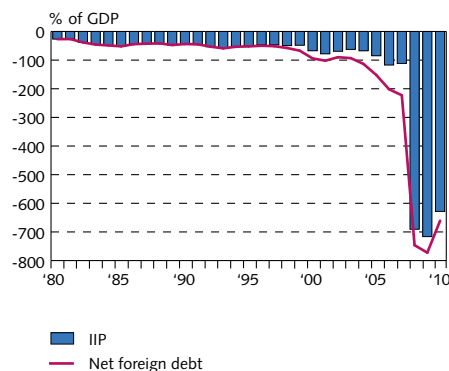
1. Latest data are preliminary.
Sources: Statistics Iceland, Central Bank of Iceland.

Chart 11
External debt and assets Q1/1998 - Q2/2011¹
At current prices



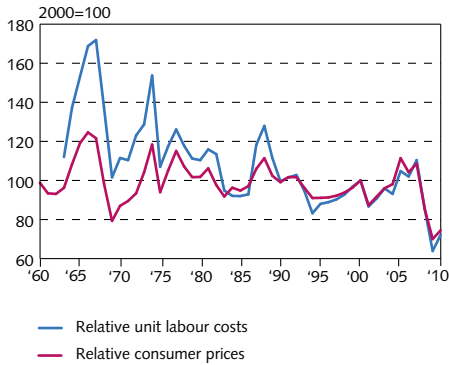
1. Latest data are preliminary.
Sources: Statistics Iceland, Central Bank of Iceland.

Chart 12
Net external debt position 1980-2010¹
At end of year



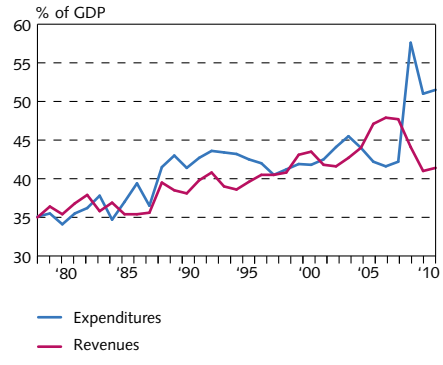
1. Latest data are preliminary.
Sources: Statistics Iceland, Central Bank of Iceland.

Chart 13
Real effective exchange rate
of the Icelandic króna 1960-2010¹



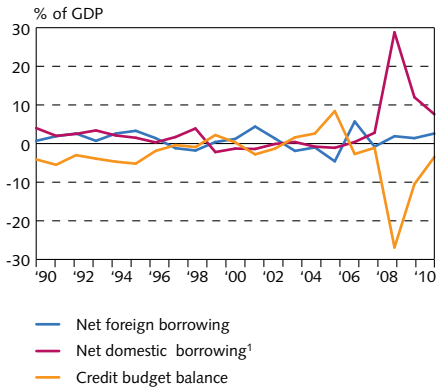
1. Preliminary data 2010.
Source: Central Bank of Iceland.

Chart 14
General government revenues and expenditures
1978-2010



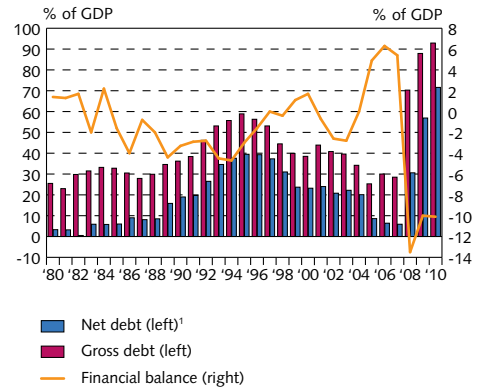
Source: Statistics Iceland.

Chart 15
Treasury borrowing and credit budget balance
1990-2010



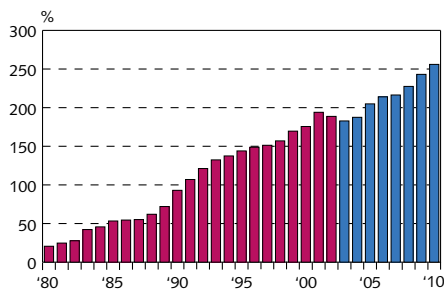
1. Including increase in pension fund commitments and outstanding long-term interest.
Sources: Financial Management Authority, Treasury accounts.

Chart 16
General government balance and debt
1980-2010



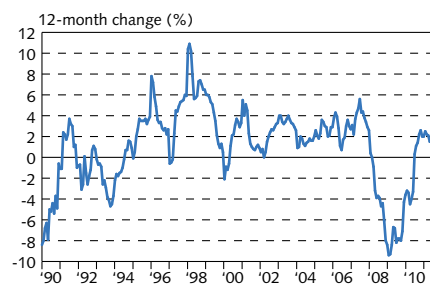
1. Debt is excluding civil service pension liabilities, assets including cash position but excluding equity holdings.
Sources: Statistics Iceland, Treasury accounts.

Chart 17
Household debt as percentage
of disposable income 1980-2010¹



1. New classification from 2003 (blue columns). Estimate for 2010.
Sources: Statistics Iceland, Central Bank of Iceland.

Chart 18
Real wages January 1990 - September 2011



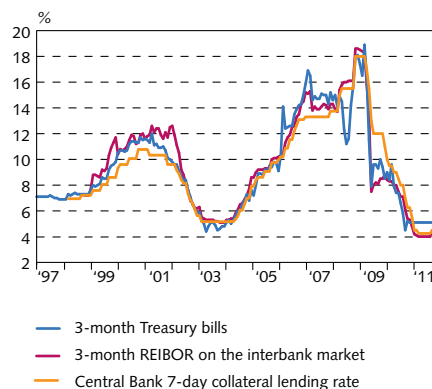
Source: Statistics Iceland.

Chart 19
Unemployment and labour participation
January 1996 - September 2011¹



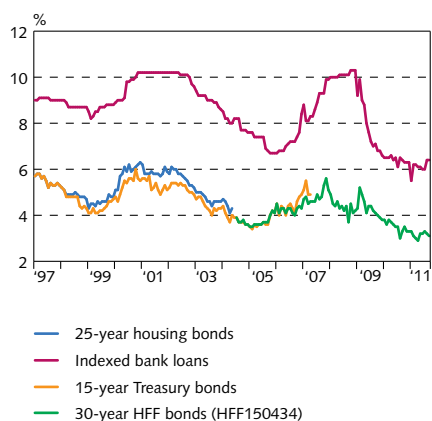
1. Statistics Iceland's labour market survey 1996-2011.
Sources: Directorate of Labour, Statistics Iceland, Central Bank of Iceland.

Chart 20
Short-term interest rates
January 1997 - September 2011
At end of month



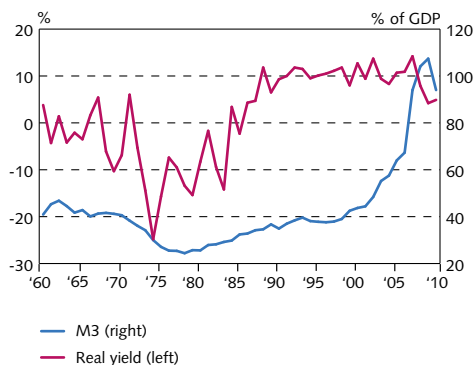
Source: Central Bank of Iceland.

Chart 21
Long-term interest rates
January 1997 - September 2011
At end of month



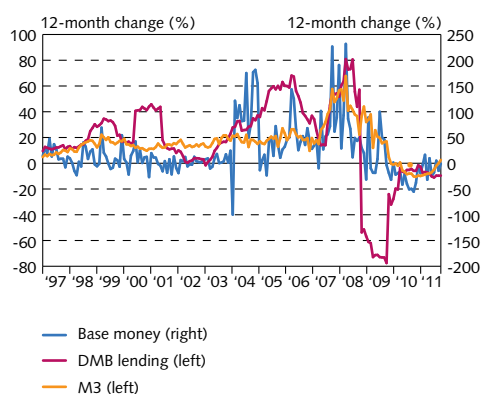
Source: Central Bank of Iceland.

Chart 22
Real yield and broad money 1960-2010¹
Real yield on non-indexed bank loans and M3 as percent of GDP



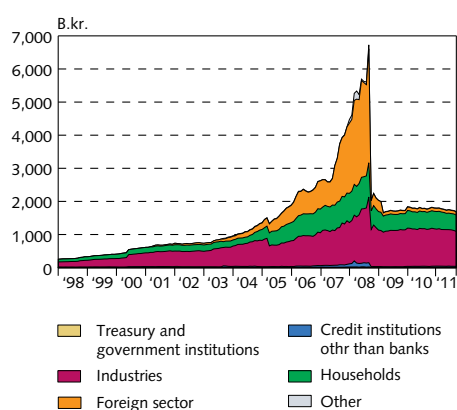
1. Latest data are preliminary.
Source: Central Bank of Iceland.

Chart 23
M3, DMB lending and base money
January 1997 - September 2011¹



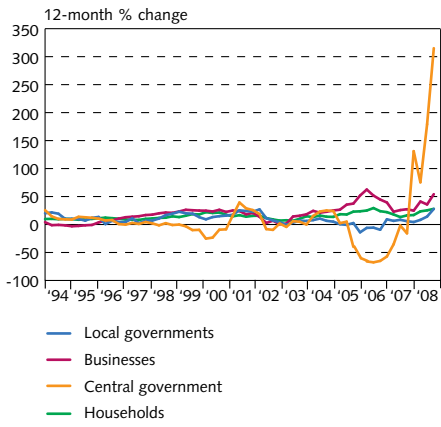
1. Latest data are preliminary.
Source: Central Bank of Iceland.

Chart 24
Deposit money bank lending by sector
January 1998 - September 2011¹



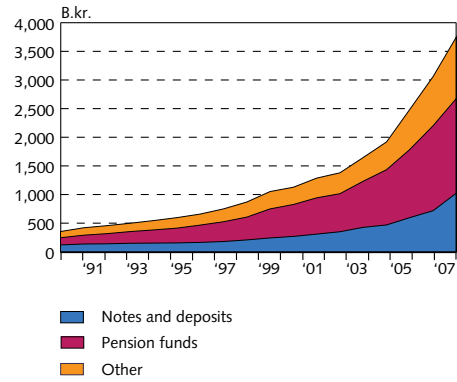
1. Reclassification of lending in September 2003 based on the ISAT-95 standard led to a reduction in household debt figures and an increase in business and municipalities' debt figures. Latest figures are preliminary.
Source: Central Bank of Iceland.

Chart 25
Growth of credit system lending
Q1/1994 - Q3/2008
 Lending by sectors¹



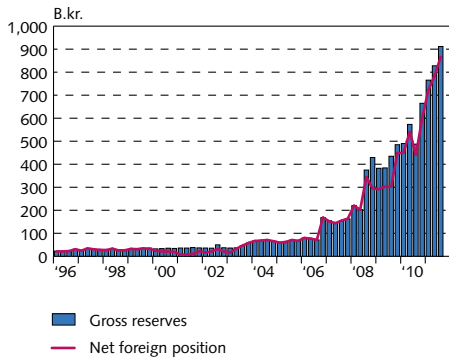
1. Reclassification of lending in September 2003 based on the ISAT-95 standard led to a reduction in household debt figures and an increase in business and municipalities' debt figures. Latest figures are preliminary. Source: Central Bank of Iceland.

Chart 26
Credit system liabilities at end of year
1990-2007
 Balance at year-end at current prices



Source: Central Bank of Iceland.

Chart 27
Reserve assets and Central Bank
net foreign position, Q1/1996 - Q3/2011¹
 At current exchange rates



1. Latest data are preliminary. Source: Central Bank of Iceland.