

Tables and charts

Tables and charts are generally based on statistical information available on 21 April 2010. A list of symbols is on p. 2.

	A	Tables
86	Table 1	Main monthly indicators
88	Table 2	Historical economic indicators
	B	Charts
90	Chart 1	Consumer price inflation 1940-2009
90	Chart 2	Economic growth 1945-2009
90	Chart 3	Growth of GDP, private consumption and gross fixed capital formation 1980-2009
90	Chart 4	Private consumption, public consumption and gross fixed capital formation as percentage of GDP 1980-2009
90	Chart 5	Quarterly economic growth Q1/1998 - Q4/2009
90	Chart 6	Components of economic growth Q1/1998 - Q4/2009
91	Chart 7	Gross national savings and fixed capital formation 1960-2009
91	Chart 8	Current account balance 1945-2009
91	Chart 9	Merchandise trade January 1996 - February 2010
91	Chart 10	Exports and imports of services Q1/1996 - Q4/2009
91	Chart 11	External debt and assets Q1/1998 - Q4/2009
91	Chart 12	External debt position 1980-2009
92	Chart 13	Real effective exchange rate of the Icelandic króna 1960-2009
92	Chart 14	General government revenues and expenditures 1980-2009
92	Chart 15	Treasury borrowing 1990-2009
92	Chart 16	General government balance and debt 1980-2009
92	Chart 17	Household debt as percentage of disposable income 1980-2008
92	Chart 18	Real wages January 1990 - February 2010
93	Chart 19	Unemployment and labour participation January 1996 - March 2010
93	Chart 20	Short-term interest rates January 1997 - March 2010
93	Chart 21	Long-term interest rates January 1997 - March 2010
93	Chart 22	Real yield and broad money 1960-2009
93	Chart 23	M3, DMB lending and base money January 1997 - December 2009
93	Chart 24	Deposit money bank lending by sector January 1998 - September 2008
94	Chart 25	Growth of credit system lending Q1/1994 - Q3/2008
94	Chart 26	Credit system domestic liabilities at year-end 1990-2007
94	Chart 27	Reserve assets and Central Bank net external position Q1/1996 - Q1/2010

Table 1 Main monthly indicators

	Consumer prices % ch. in CPI ¹ over the previous		Exchange rate % ch. in effective exchange rate ^{1,2}		Yields (end of period, %)				Money and credit (end of period) ⁶				
	1 month	12 months	1 month	12 months	Short-term		Long-term ⁵		Base money	M3	DMB lending	DMB foreign liabilities ⁷	% change
					Central Bank col- lateral loans ³	3-month REIBOR ⁴	RIKB 10 0317	RIKB 13 0517					
2008													
January	0.2	5.8	-3.6	0.4	13.8	13.9	11.1	9.5	4.7	29.0	57.5	39.8	68.0
February	1.4	6.8	-3.5	-6.4	13.8	13.7	12.1	9.8	4.4	93.1	48.7	42.5	100.4
March	1.5	8.7	-10.5	-16.1	15.0	15.4	13.2	12.3	4.3	231.7	67.8	54.0	92.4
April	3.4	11.8	-3.8	-20.2	15.5	15.8	12.5	11.7	4.4	86.1	40.9	45.1	93.6
May	1.4	12.3	-0.7	-23.4	15.5	16.0	10.5	9.6	4.2	66.8	44.6	48.4	93.3
June	0.9	12.7	-4.8	-27.8	15.5	16.0	12.0	10.2	4.3	11.6	41.5	52.4	95.5
July	0.9	13.6	0.0	-29.0	15.5	16.1	12.8	10.7	4.1	49.1	37.8	49.9	64.7
August	0.9	14.5	0.0	-24.3	15.5	16.1	13.0	10.6	4.2	43.4	36.6	44.4	91.7
September	0.9	14.0	-7.8	-30.5	15.5	16.1	10.8	9.0	3.7	49.8	22.2	66.8	-92.7
October	2.2	15.9	-15.4	-43.0	18.0	18.6	15.5	15.0	4.5	32.0	39.2	...	-92.1
November	1.7	17.1	-11.7	-48.6	18.0	18.6	18.0	13.4	4.0	19.9	49.2	...	-49.3
December	1.5	18.1	6.4	-44.5	18.0	18.5	13.2	10.8	4.1	-31.5	36.4	...	-93.6
2009													
January	0.6	18.6	1.3	-41.7	18.0	18.4	9.7	9.1	4.1	88.9	37.0	...	-93.9
February	0.5	17.6	11.7	-32.5	18.0	18.3	10.0	9.2	4.8	-9.8	42.2	...	-99.3
March	-0.6	15.2	-1.5	-25.8	17.0	15.8	9.7	8.9	4.6	-18.5	13.1	...	-99.3
April	0.4	11.9	-10.7	-31.1	15.5	13.5	9.7	7.9	4.4	-18.7	27.1	...	-99.3
May	1.1	11.6	-2.9	-32.6	13.0	7.5	5.5	7.2	4.1	8.2	22.6	...	-99.4
June	1.4	12.2	-2.2	-30.8	12.0	8.0	6.0	8.3	4.4	99.9	23.0	...	-99.6
July	0.2	11.3	-1.3	-31.7	12.0	8.2	6.7	8.4	4.5	49.8	19.2	...	-99.6
August	0.5	10.9	-1.3	-32.6	12.0	8.1	6.5	7.6	4.2	46.3	20.1	...	-99.6
September	0.8	10.8	0.5	-26.6	12.0	8.5	7.0	7.5	4.1	-3.5	19.7	...	-86.3
October	1.1	9.7	-0.7	-13.9	12.0	8.5	8.1	7.3	3.9	-20.2	6.7	...	-88.1
November	0.7	8.6	-0.7	-3.1	11.0	8.8	8.3	7.6	3.9	-32.1	-1.2	...	-98.3
December	0.5	7.5	0.6	-8.3	10.0	8.4	8.3	7.5	3.8	5.2	-4.9
2010													
January	-0.3	6.6	0.7	-8.8	9.5	8.3	9.1	7.3	3.8
February	1.1	7.3	1.2	-17.3	9.5	8.3	...	7.1	3.7
March	0.6	8.5	1.2	-15.1	9.0	8.0	...	6.3	3.8

1. Percentage changes between period averages. 2. Based on the official effective exchange rate basket (trade-weighted). A positive sign indicates appreciation of the Icelandic króna. 3. From June 2007, the presentation of the policy rate has been changed. It is now presented as a nominal rate instead of a yield. 4. Average yield on the interbank market in Icelandic krónur. 5. For Treasury bonds and HFF bonds, the quoted yield is in excess of changes in the CPI. Trading with HFF bonds began in July 2004; prior figures are for housing bonds. 6. Annual figures are changes over one year. Domestic borrowers only as of January 2002. Latest figures are preliminary. 7. DMBs = deposit money banks = commercial and savings banks and other institutions permitted to accept deposits from the public. Since July 2007, derivatives have been counted as foreign liabilities, and the presentation of the Central Bank's short-term position has been changed.

Table 1 (continued) Main monthly indicators

	Foreign exchange market and reserves				Foreign trade and external conditions				Labour market			Public finance	
	Gross foreign currency reserves:		CB		Trade balance (b.kr.)	Merchandise exports (b.kr.)	Merchandise imports (b.kr.)	Marine product prices 12-mo. % ch. ¹⁰ króna ¹¹	Unemployment	Wages, 12-mo. % change ¹²	Reg. Treasury financial balance, % of reg. revenues, from Jan. ¹³	Equity prices ¹⁴	Asset prices 12-mo. % changes
	Position B.kr.	Merch. imports ⁸	as ratio of:	net purchases (b.kr.)									
2008													
January	174.8	4.9	0.08	1.5	-9.9	24.6	34.5	5.6	103.9	6.2	44.2	-22.2	14.0
February	182.8	5.0	0.08	1.6	-12.6	19.4	31.9	13.2	101.1	6.8	36.9	-33.2	12.7
March	220.0	5.1	0.06	1.3	-2.3	34.3	36.6	27.7	91.0	7.8	25.9	-32.6	9.6
April	206.8	5.0	0.06	0.0	-0.6	40.1	40.7	30.1	89.8	8.2	20.8	-32.8	7.0
May	190.1	4.5	0.05	0.0	-2.5	47.6	50.1	36.0	90.1	7.9	17.1	-41.9	3.8
June	203.0	4.5	0.0	0.0	2.4	41.5	39.1	48.7	85.9	8.5	11.4	-47.3	3.2
July	227.0	5.0	0.1	0.0	-22.9	34.2	57.0	47.6	86.6	9.1	9.4	-52.3	2.6
August	307.7	6.7	0.1	0.0	-3.2	31.4	34.5	38.1	87.6	9.1	3.5	-49.3	1.6
September	374.8	6.8	0.1	0.0	7.1	49.5	42.4	44.6	81.6	9.0	3.3	-57.4	0.6
October	409.9	7.0	2.4	-28.9	11.3	47.5	36.2	75.4	70.7	8.8	2.9	-92.0	-2.4
November	506.6	7.3	2.5	-21.1	2.5	43.2	40.6	88.7	63.6	7.8	-0.7	-90.8	-1.2
December	429.3	7.7	2.3	-3.4	24.1	53.8	29.8	72.1	69.5	8.3	-2.2	-94.4	-2.5
2009													
January	364.2	7.4	2.1	-1.3	0.3	33.6	33.2	55.9	71.0	7.5	29.4	-94.3	-5.5
February	341.0	7.4	2.0	-1.5	6.0	32.4	26.4	28.3	79.7	6.7	11.2	-94.3	-5.3
March	382.5	8.0	18.9	-0.2	8.3	34.7	27.8	12.2	77.7	8.9	-1.1	-95.7	-8.5
April	413.7	8.8	19.5	-1.1	1.0	31.7	30.7	21.5	69.5	9.1	-11.1	-95.8	-9.4
May	426.1	9.9	20.0	-2.0	7.4	38.7	31.3	26.6	68.1	8.7	-21.7	-94.4	-10.5
June	384.1	9.1	16.8	-2.5	7.2	40.7	33.5	18.3	67.2	8.1	-26.4	-94.0	-10.8
July	385.1	10.0	14.0	-1.3	4.6	41.7	37.1	21.2	66.7	8.0	-36.3	-94.0	-11.2
August	449.3	12.4	16.9	-1.2	12.6	44.1	31.4	24.8	66.1	7.7	-25.6	-94.0	-10.3
September	434.7	12.6	16.0	-0.5	3.1	51.3	40.5	13.6	66.9	7.2	-25.3	-94.0	-10.2
October	451.0	13.0	9.8	-1.4	12.1	46.9	34.8	-1.3	67.1	7.6	-29.4	-94.0	-10.0
November	402.8	11.7	8.9	-1.7	2.1	44.3	42.2	-10.2	67.0	8.0	-31.8	-94.0	-11.1
December	484.9	14.1	10.9	...	7.0	42.0	35.0	-3.0	67.7	8.2	-33.3	-94.0	-12.0
2010													
January	475.0	13.7	10.0	42.2	32.1	1.4	68.1	9.0	-56.8	-94.0	-10.2
February	480.1	14.0	13.9	44.3	30.4	18.4	69.4	9.3	-8.3	-94.0	-10.0
March	70.2	9.3	...	-94.0	...

8. Gross foreign exchange reserves at end of period as a ratio of the average monthly value of merchandise imports. Calculated at fixed exchange rates. 9. The denominator is foreign short-term liabilities of credit institutions and investment banks and includes derivatives as of July 2007. 10. Prices in SDR. Annual figures are % changes between annual averages. Since January 2007, the 12-month percentage change in marine product prices denominated in krónur. 11. Real effective exchange rate of the Icelandic króna based on relative consumer prices (a trade-weighted average of 17 trading partner countries' consumer prices is used), 2000 = 100. Average over periods. 12. Annual figures show change in annual averages. 13. Cash basis. Without privatisation revenues. Adjusted for changed timing of expenditure changes in Jan.-Nov. 2004. 14. OMXI15 index. Annual figures are % changes over year. 15. Residential housing in the greater Reykjavík area. Annual figures are % changes over year.

Sources: Directorate of Labour, Iceland Stock Exchange (Nasdaq OMX Iceland), Land Registry of Iceland, State Accounting Office, Statistics Iceland, Central Bank of Iceland.

Table 2 Historical economic indicators

	Consumer prices ¹		Króna effective exchange rate		Interest rates (%)		Money and credit		Ratio of gr. reserves to merch. imports ⁵	Net external debt ⁶	Growth of real GDP (%)			
	Consumer price index ¹	CPI inflation (%)	Nominal exchange rate ²	Real exchange rate ³ Relative CPI	Relative ULC	Gov. bonds average yield ⁴	Banks' secured lending (real yield) Non-indexed	% change over year DMB lending				Credit system lending		
1980	8.1	61.8	25.9	101.8	110.4	3.5	-8.3	2.3	65.4	66.4	71.1	2.4	35.9	5.8
1981	12.2	50.8	34.7	106.2	115.8	3.2	-1.7	2.5	70.5	72.2	54.1	3.0	36.5	4.3
1982	18.4	51.0	54.5	97.7	113.4	3.5	-9.4	2.9	58.0	92.0	100.2	2.1	46.4	2.2
1983	33.9	84.2	100.0	91.8	94.7	3.8	-14.2	3.0	78.7	85.6	82.9	2.5	57.2	-2.2
1984	43.7	29.2	116.3	96.3	91.8	7.0	3.4	5.5	33.4	43.0	40.2	2.1	60.2	4.1
1985	57.9	32.4	148.7	94.8	91.7	6.9	-2.3	5.0	47.6	29.7	35.2	2.8	63.6	3.3
1986	70.2	21.3	171.0	97.1	92.6	8.5	4.3	5.2	35.0	19.1	20.1	3.6	56.5	6.3
1987	83.4	18.8	177.3	106.0	118.0	8.7	4.7	7.7	35.2	42.1	31.4	2.4	49.4	8.5
1988	104.6	25.4	202.6	111.4	127.6	8.7	11.8	9.2	24.0	37.2	34.0	2.4	51.3	-0.1
1989	126.7	21.1	254.7	102.4	111.2	7.4	6.5	7.8	27.2	25.2	33.8	3.0	56.8	0.3
1990	145.5	14.8	283.7	99.1	99.3	7.0	9.3	8.0	14.9	11.0	12.5	3.3	43.8	1.2
1991	155.4	6.8	283.6	101.7	101.2	8.1	10.0	9.2	14.4	11.6	15.4	3.2	44.9	-0.2
1992	161.2	3.7	285.0	101.7	102.5	7.4	11.8	9.3	3.8	5.3	11.8	4.0	53.0	-3.4
1993	167.8	4.1	308.8	96.2	94.4	6.7	11.5	9.1	6.5	5.0	11.1	4.3	58.9	1.3
1994	170.3	1.5	324.8	91.0	83.1	5.0	9.5	7.9	2.3	-1.3	4.5	2.6	53.3	3.6
1995	173.2	1.7	322.3	91.1	87.8	5.6	10.1	8.7	2.2	-8.5	5.9	2.4	52.0	0.1
1996	177.1	2.3	322.9	91.3	88.7	5.5	10.5	8.9	6.8	11.8	9.3	3.0	49.8	4.8
1997	180.3	1.8	318.7	92.2	90.1	5.3	11.1	9.0	8.7	12.7	11.8	2.6	51.3	4.9
1998	183.3	1.7	313.6	93.8	92.8	4.7	11.8	8.8	15.1	30.3	15.1	2.2	57.6	6.3
1999	189.6	3.4	313.1	96.3	96.7	4.4	8.0	8.6	17.1	26.3	17.3	2.6	67.1	4.1
2000	199.1	5.0	313.3	100.0	100.0	5.1	12.7	9.5	11.2	26.1	17.2	2.1	94.0	4.3
2001	212.4	6.7	376.3	87.3	86.6	5.1	9.4	10.2	14.9	12.6	19.2	2.1	102.0	3.9
2002	222.5	4.8	365.2	91.7	90.2	5.2	13.7	10.1	15.3	0.9	3.2	2.5	89.8	0.1
2003	227.3	2.2	343.3	96.0	95.2	4.4	9.4	9.1	17.5	14.8	11.4	3.5	93.1	2.4
2004	234.6	3.2	336.3	98.1	92.5	3.9	8.3	8.0	15.0	39.5	19.9	3.6	113.5	7.7
2005	244.1	4.0	301.8	111.4	104.1	3.7	10.7	7.2	23.2	51.5	31.1	2.9	152.0	7.5
2006	260.6	6.8	337.2	104.2	101.7	4.6	10.9	7.1	19.4	41.4	31.0	4.8	203.2	4.3
2007	273.7	5.0	328.9	108.6	111.6	6.0	14.3	8.9	56.6	30.6	22.7	4.9	228.8	5.6
2008	307.7	12.4	462.6	85.5	111.0	9.4	8.1	10.0	36.3	.	.	7.7	462.4	1.3
2009	344.6	12.0	622.3	70.0	63.5	4.4	7.2	8.6	-4.9	.	.	14.1	460.5	-6.5

1. Annual averages (May 1988=100) and changes between years. 2. Annual averages. Exchange rate of the króna against a trade-weighted average of foreign currencies. 1983=100. 3. 2000=100. ULC=unit labour costs. 4. Annual average yield of indexed Treasury bonds of all maturities. Yields on Iceland Stock Exchange (OMX Iceland) from 1987. Before that, primary market yields. 5. Gross foreign exchange reserves at end of period as a ratio of the average monthly value of merchandise imports in the last 12 months. Calculated at fixed exchange rates. 6. External debt ratio is calculated as a percentage of accumulated GDP for the last four quarters at current exchange rate.

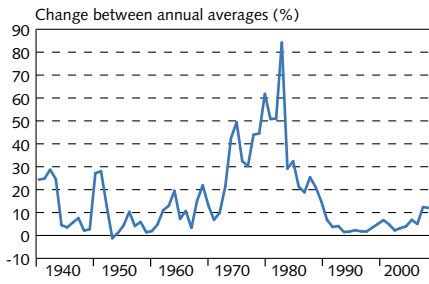
Table 2 (continued) Historical economic indicators

	Components of GDP				External trade				General government (% of GDP) ⁷			Labour market (% of labour force)		Wages (% change from previous year)	
	(% change from previous year)		National expenditure		(% change from previous year)		Terms of trade		Financial balance	Revenues	Expenditures	Unemployment	Labour particip. ⁸	Real wages ⁹	Real income
	Private consumption	Gross fixed cap. formation	Exports	Imports	Exports	Imports	Curr. acc. balance (% of GDP)								
1980	3.4	13.9	5.9	2.7	3.0	-2.8	-1.9	1.4	35.4	34.1	0.3	74.1		1.1	
1981	6.2	1.2	5.6	3.2	7.1	-0.4	-4.1	1.3	36.8	35.5	0.4	76.8	0.7	5.4	
1982	5.0	0.1	5.0	-8.9	-0.6	-0.7	-8.0	1.7	37.9	36.2	0.8	77.6	1.7	2.2	
1983	-5.6	-12.7	-8.6	11.0	-9.7	-1.4	-1.8	-2.0	35.8	37.8	1.0	77.4	-16.7	-12.5	
1984	3.7	9.4	6.4	2.4	9.1	0.7	-4.5	2.2	36.9	34.7	1.3	77.6	-3.1	-2.5	
1985	4.2	1.0	2.7	11.1	9.4	-0.9	-3.8	-1.6	35.4	37.0	0.9	79.3	1.2	10.8	
1986	6.9	-1.6	4.5	5.9	0.9	5.4	0.7	-4.0	35.4	39.4	0.7	80.9	5.7	9.5	
1987	16.2	18.8	15.7	3.3	23.3	4.3	-3.3	-0.8	35.6	36.5	0.4	84.1	9.0	25.8	
1988	-3.8	-0.2	-0.6	-3.6	-4.6	-0.8	-3.4	-2.0	39.5	41.5	0.6	80.1	2.2	-2.7	
1989	-4.2	-7.9	-4.4	2.9	-10.3	-3.9	-1.3	-4.4	38.5	43.0	1.7	78.7	-9.1	-9.4	
1990	0.5	3.0	1.5	0.0	1.0	-3.2	-2.1	-3.3	38.1	41.4	1.8	77.5	-4.9	-4.6	
1991	3.0	2.6	3.5	-5.9	5.3	3.5	-4.0	-2.9	39.8	42.7	1.5	81.0	1.4	2.1	
1992	-3.2	-10.4	-4.6	-2.0	-6.0	-0.5	-2.4	-2.8	40.8	43.6	3.1	81.8	-0.8	-2.7	
1993	-4.6	-9.8	-2.9	6.5	-7.5	-3.7	0.7	-4.5	39.0	43.4	4.4	81.1	-2.6	-0.8	
1994	2.9	-0.2	1.8	9.3	3.8	0.2	1.9	-4.7	38.6	43.2	4.8	81.3	-0.3	-0.1	
1995	2.2	-1.7	2.2	-2.3	3.6	1.1	0.7	-3.0	39.6	42.5	5.0	82.9	2.8	3.8	
1996	5.7	25.0	6.8	9.9	16.5	-3.2	-1.8	-1.6	40.5	42.0	4.4	81.6	4.0	4.1	
1997	6.3	9.3	5.8	5.6	8.0	2.1	-1.8	0.0	40.5	40.5	3.9	81.0	3.6	7.8	
1998	10.2	34.4	13.8	2.5	23.4	5.1	-6.8	-0.4	40.8	41.2	2.8	82.3	7.6	8.4	
1999	7.9	-4.1	4.2	4.0	4.4	-0.6	-6.8	1.1	43.1	41.9	1.9	83.2	3.3	6.7	
2000	4.2	11.8	5.9	4.2	8.6	-2.4	-10.2	1.7	43.5	41.8	1.3	83.5	1.6	7.1	
2001	-2.8	-4.3	-2.1	7.4	-9.1	0.3	-4.3	-0.7	41.8	42.5	1.4	83.6	2.0	-0.3	
2002	-1.5	-14.0	-2.3	3.8	-2.6	0.6	1.5	-2.6	41.6	44.1	2.5	82.8	2.3	0.2	
2003	6.1	11.1	5.7	1.6	10.7	-4.1	-4.8	-2.8	42.7	45.6	3.4	82.1	3.4	5.8	
2004	7.0	28.1	9.9	8.4	14.5	-1.3	-9.8	0.0	44.1	44.0	3.1	80.7	1.4	6.5	
2005	12.7	35.7	15.7	7.5	29.3	1.0	-16.3	4.9	47.0	42.1	2.1	81.9	2.6	10.9	
2006	3.6	21.6	9.2	-4.6	10.4	3.4	-25.6	6.3	47.9	41.6	1.2	83.1	2.6	10.5	
2007	5.6	-12.2	-0.4	17.7	-0.7	0.1	-20.1	5.4	47.9	42.5	1.0	83.3	3.8	8.8	
2008	-7.8	-20.4	-8.6	7.1	-18.3	-6.1	-42.2	-13.6	44.2	57.8	1.6	82.6	-3.8	0.4	
2009	-14.6	-49.9	-20.1	6.2	-24.0	-10.1	-3.3	-9.1	42.4	51.5	8.0	80.9	-7.2	-18.0	

7. Central and local governments and the social security system. 8. Participation rate as per National Economic Institute definition until 1990, but based on Statistics Iceland labour market survey from 1991. 9. Statistics Iceland wage index. Deflated by consumer prices. Since January 2007, the 12-month percentage change in marine product prices denominated in krónur.

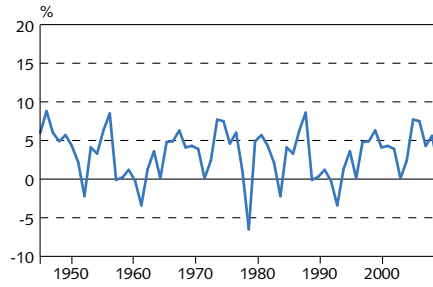
Sources: Directorate of Labour, Iceland Stock Exchange (Nasdaq OMX Iceland), Ministry of Finance, Statistics Iceland, Central Bank of Iceland.

Chart 1
Consumer price inflation 1940-2009



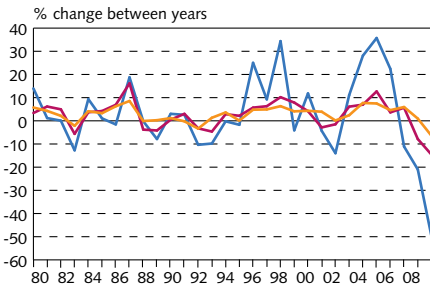
Sources: Statistics Iceland, Central Bank of Iceland.

Chart 2
Economic growth 1945-2009¹
Change in real GDP between years



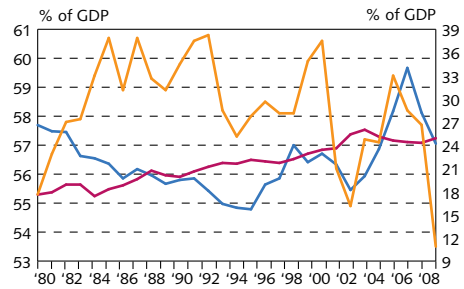
1. Preliminary 2009.
Sources: Statistics Iceland, Central Bank of Iceland.

Chart 3
Growth of GDP, private consumption and gross fixed capital formation 1980-2009¹



1. Preliminary 2009.
Source: Statistics Iceland.

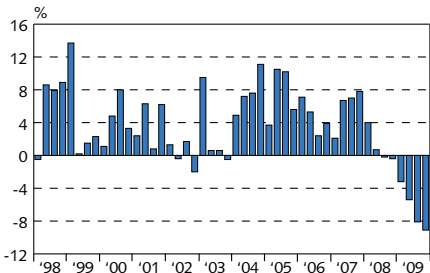
Chart 4
Private consumption, public consumption and gross fixed capital formation 1980-2009¹



1. Preliminary 2009.
Source: Statistics Iceland.

Chart 5
Quarterly economic growth
Q1/1998 - Q4/2009¹

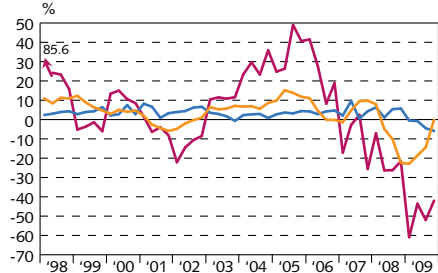
Volume change in GDP on a year earlier (%)



1. Latest data are preliminary.
Source: Statistics Iceland.

Chart 6
Components of economic growth
Q1/1998 - Q4/2009¹

Volume change on a year earlier (%)



1. Latest data are preliminary.
Source: Statistics Iceland.

Chart 7
Gross national saving and fixed capital formation 1960-2009¹

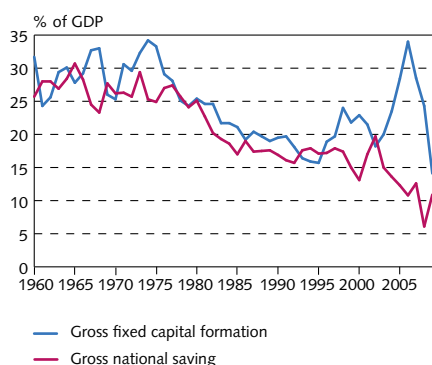


Chart 8
Current account balance 1945-2009¹

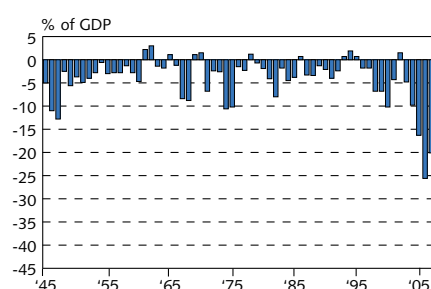


Chart 9
Merchandise trade
January 1996 - February 2010¹
3-month moving averages at fixed exchange rates

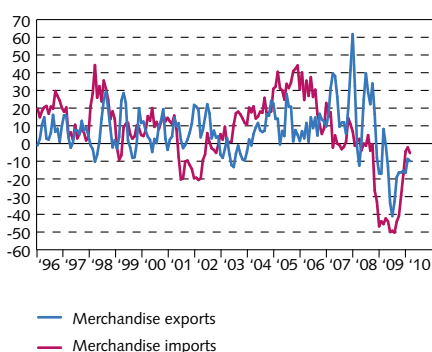


Chart 10
Exports and imports of services
Q1/1996 - Q4/2009¹
At constant exchange rate

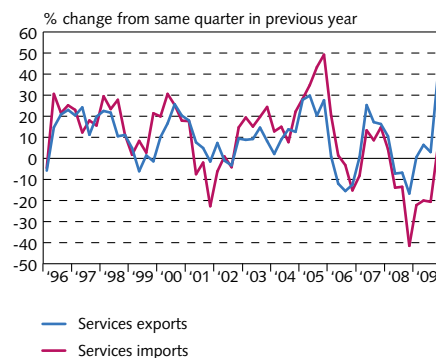


Chart 11
External debt and assets Q1/1998 - Q4/2009¹
At current prices

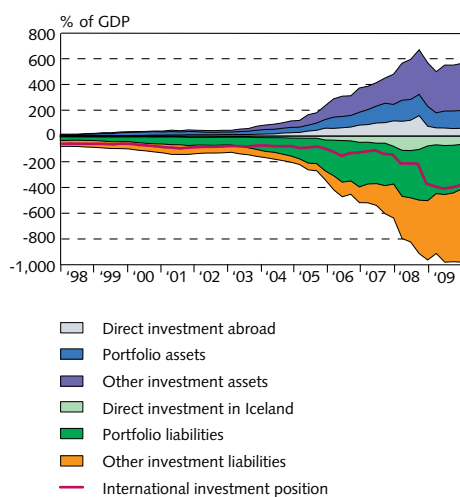


Chart 12
External debt position 1980-2009¹
At end of year and latest quarter

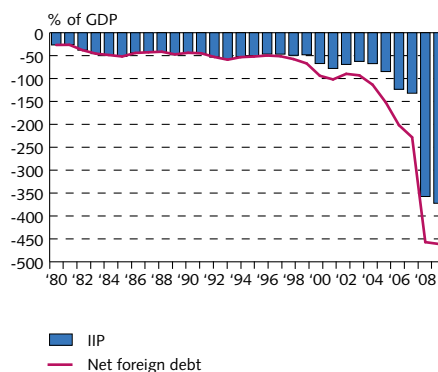
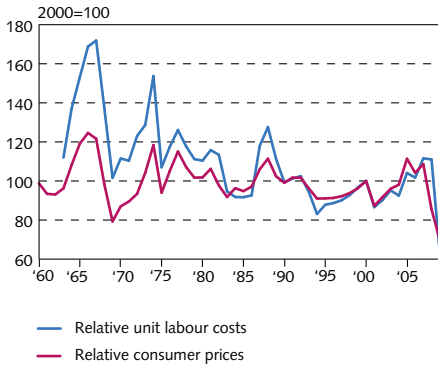
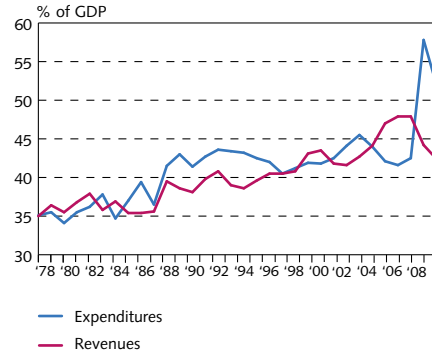


Chart 13
Real effective exchange rate of the Icelandic króna 1960-2009¹



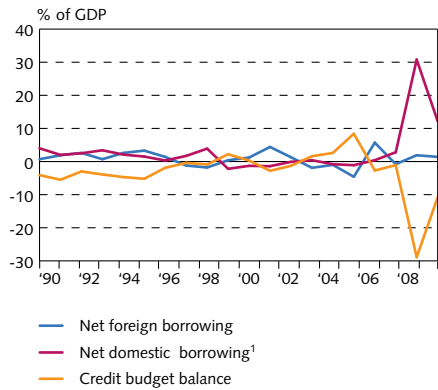
1. Preliminary 2009.
Source: Central Bank of Iceland.

Chart 14
General government revenues and expenditures 1978-2009



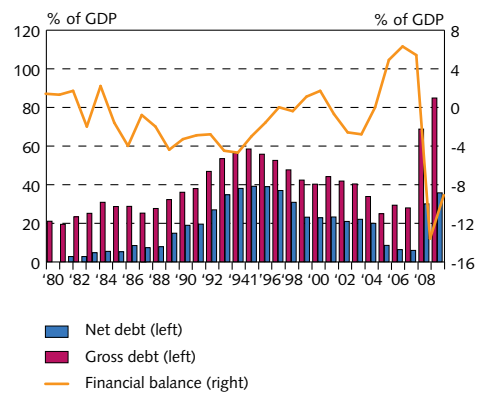
Source: Statistics Iceland.

Chart 15
Treasury borrowing 1990-2009



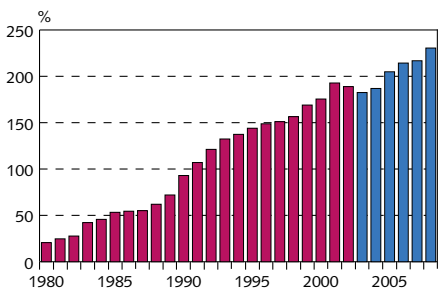
1. Including reduction in pension fund commitments and outstanding long-term interest.
Source: Treasury accounts.

Chart 16
General government balance and debt 1980-2009



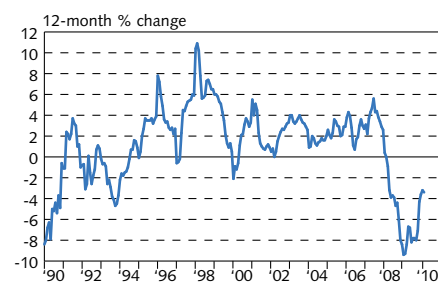
Sources: Ministry of Finance, Statistics Iceland, Central Bank projections.

Chart 17
Household debt as percentage of disposable income 1980-2008¹



1. New classification from 2003 (blue columns). Estimate for 2008.
Sources: Statistics Iceland, Central Bank of Iceland.

Chart 18
Real wages January 1990 - February 2010



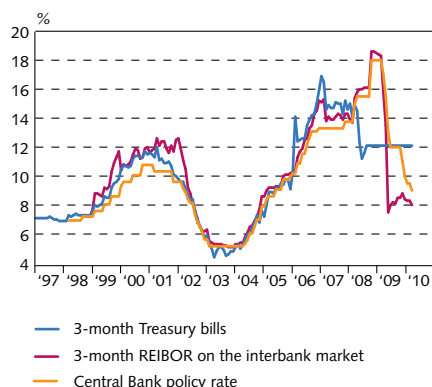
Source: Statistics Iceland.

Chart 19
Unemployment and labour participation¹
January 1996 - March 2010



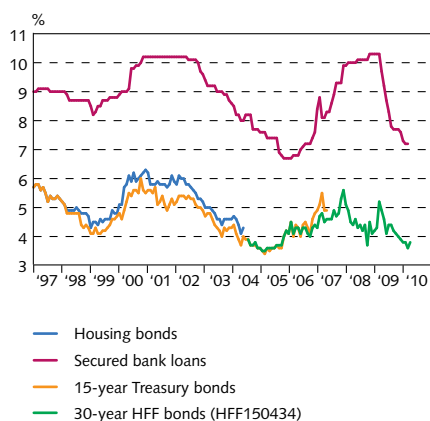
1. Statistics Iceland's labour market survey 1996-2009.
Sources: Directorate of Labour, Statistics Iceland, Central Bank of Iceland.

Chart 20
Short-term interest rates
January 1997 - March 2010
At end of month



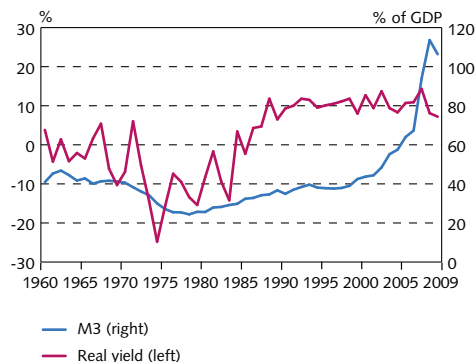
Source: Central Bank of Iceland.

Chart 21
Long-term interest rates
January 1997 - March 2010
At month-end



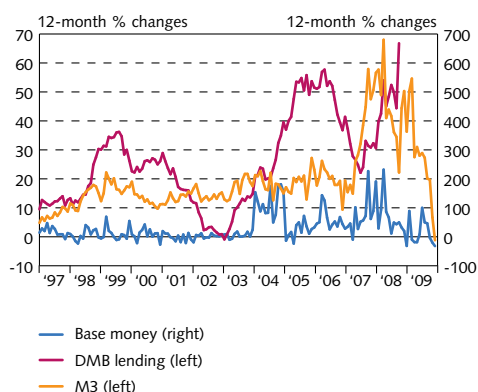
Source: Central Bank of Iceland.

Chart 22
Real yield and broad money 1960-2009¹
Real yield on non-indexed bank loans and M3 as percent of GDP



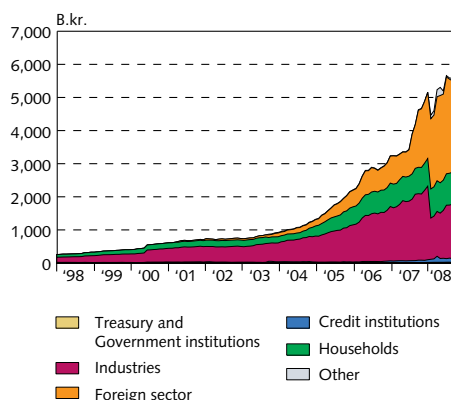
1. Latest data are preliminary.
Source: Central Bank of Iceland.

chart 23
M3, DMB lending and base money
January 1997 - December 2009¹



1. Latest figures are preliminary. Latest data for M3 and DMB lending are for September.
Source: Central Bank of Iceland.

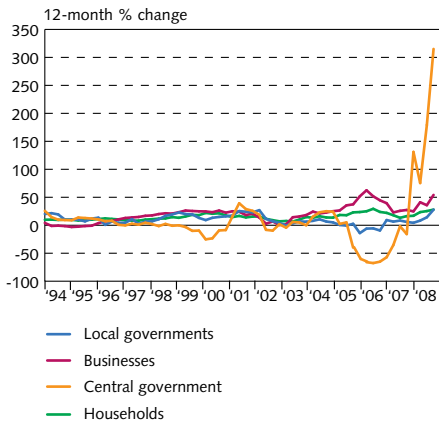
Chart 24
Deposit money bank lending by sector
January 1998 - September 2008¹



1. Reclassification of lending in September 2003 based on the ÍSAT-95 standard led to a reduction in household debt figures and an increase in business and municipalities' debt figures. Latest figures are preliminary.
Source: Central Bank of Iceland.

Chart 25
Growth of credit system lending
Q1/1994 - Q3/2008

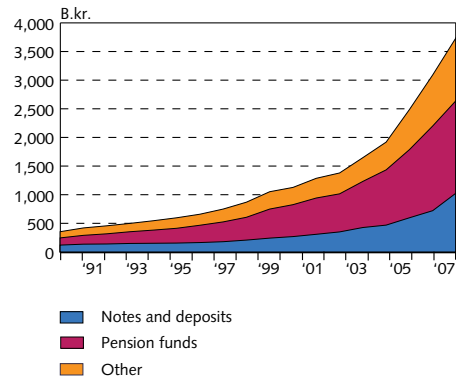
Lending by sectors¹



1. Reclassification of lending in September 2003 based on the ISAT-95 standard led to a reduction in household debt figures and an increase in businesses' and municipalities' debt figures. Latest figures are preliminary.
Source: Central Bank of Iceland.

Chart 26
Credit system liabilities at end of year
1990-2007¹

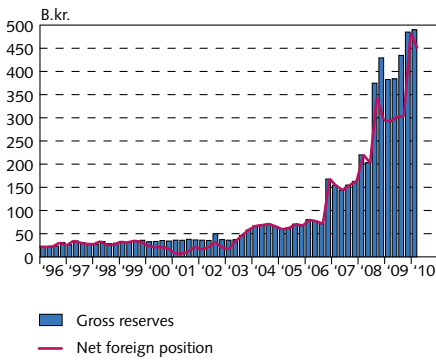
At current prices



1. Latest figures are preliminary.
Source: Central Bank of Iceland.

Chart 27
Reserve assets and Central Bank net
foreign position, Q1/1996 - Q1/2010¹

Quarterly, at current exchange rates



1. Latest data are preliminary.
Source: Central Bank of Iceland.